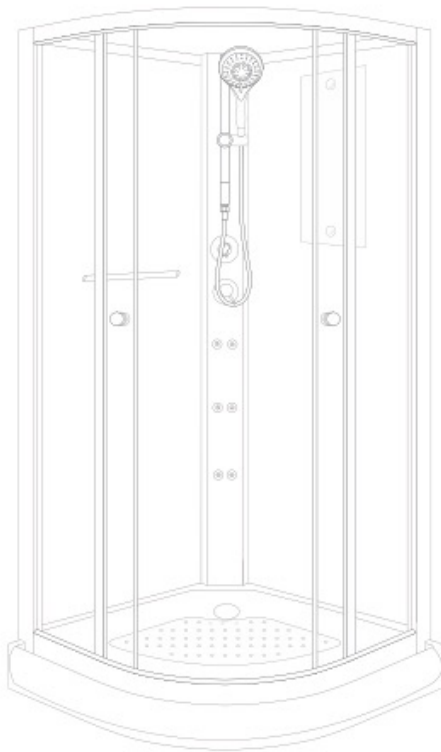


Installationsanvisning
STOCKHOLM 90x90x210cm



Vigtig information, før du starter.

1) General information







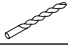
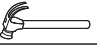


Sørg for at kontrollere produktet grundigt ved modtagelse. Skulle der forekomme mangler eller skader skal disse meldes til forhandler/producent. Vær forsigtig ved håndtering af glassdelene, og undgå at sætte glasset direkte på hårde flader. Eventuelle skader på glasset efter produktet er pakket ud, vil ikke blive betragtet som et gyldigt grundlag for reklamation.

Vær opmærksom på at aluminiumsprofilerne godt kan have mærker fra produktionen, da materialet er blødt og det under fremstillingen er blevet poleret, Profilerne er i kvalitetskontrollen blevet testet og godkendt til anvendelse på kabinen.

2) Ekstra information

Sørg for at gennemgå manualen grundigt før samling påbegyndes. Vær opmærksom på at den ønskede placering til kabinen giver mulighed for vandtjørsel samt gulvafløb. Da flere af delene kan være tunge, og /eller svære at håndtere anbefales det at man er to til at foretage samlingen af kabinen.

Nødvendigt værktøj

Målebånd		Boremaskine	
Vaterpas		Skrutrækker	
Blyant		Stjerneskrutrækker	 PZ 1
Ø6 mm bor		Hammer	
Ø3 mm bor		Silikonfugemasse	

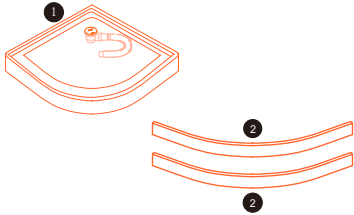


OBS, det er et tungt produkt og kan være svært at håndtere, så det anbefales at man er to til at samle kabinen.

INDHOLD

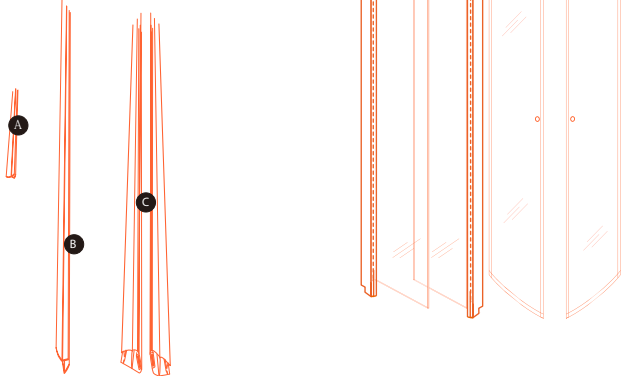
DEL 1/4

- ① 1 x komplet bundkar med afløb
- ② 2x horisontale aluminiumprofiler



DEL 2/4

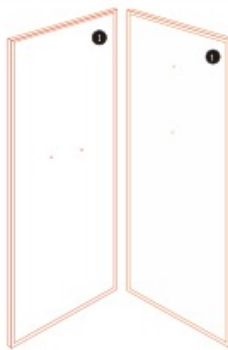
- ① 2x Sideglas med monterede aluminiumsprofiler
- ② 2x Glasdøre
- ③ Gummiiliste sæt:
 - A 4x korte gummiilister til sideglas
 - B 4x lange gummiilister til montering på sideglas og dør (2stk er for monteret)
 - C 2x magnetlister til dørene



INDHOLD

DEL 3/4

- ① 2x Glas bagvægge



OBS ! OBS ! OBS !

Glas:
I det omfang det er muligt, bør man altid være 2 personer, så at lufte og håndtere glasset.

Er man alene, bør man altid lufte på flere af glassederne, og ikke lige over midten.

Glasset er tungt, og har tyngde i begge ender, og kan derfor gå i stykker, hvis man behandler det forkert.

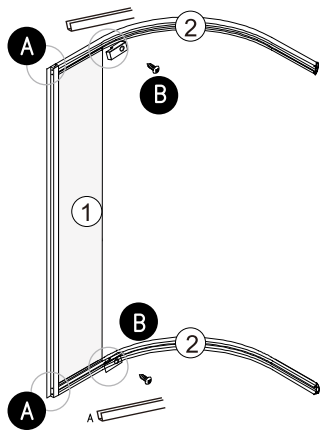
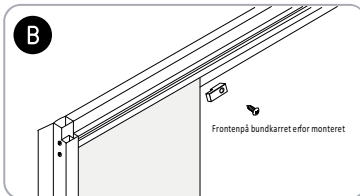
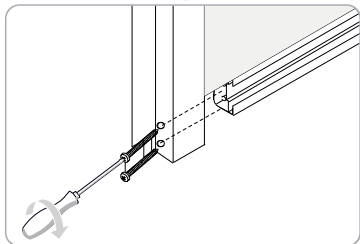
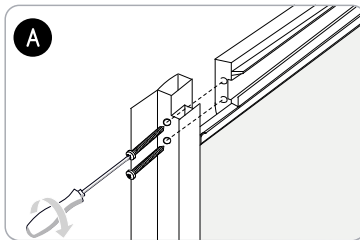
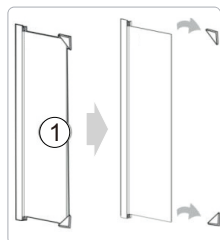
DEL 4/4

- ① 1x Bagpanel
② 1x Spejl
③ 1x Komplet brusestangssæt
④ 1x håndklædestang
⑤ 1x Pose med løsdele
- A 2x Dørhåndtag
B 4x Tophjul
C 4x Bundhjul
D 8x Skruer M4x25
E 20x Skruer M4x12
F 4x Skruer M4x20



SAMLEVEJLEDNING

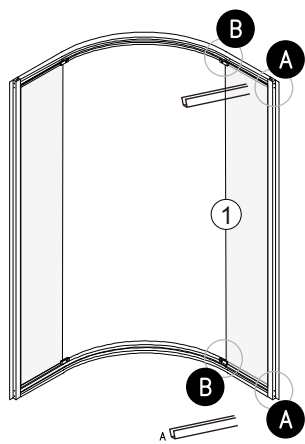
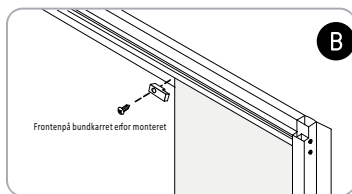
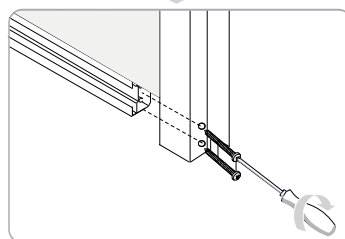
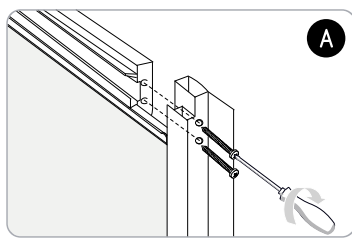
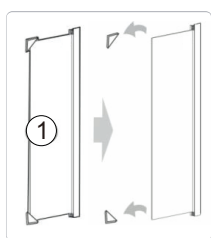
4



Monter gummiliste på sideglasset før det monteres i profilerne.

SAMLEVEJLEDNING

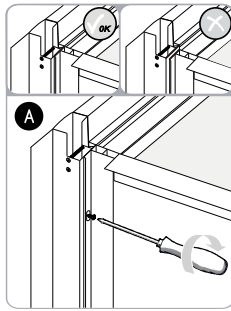
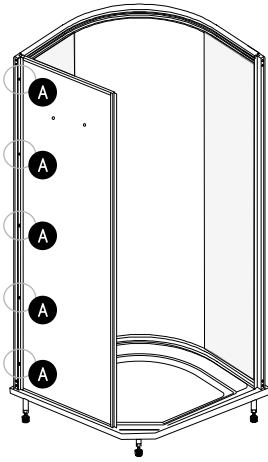
5



Monter gummiliste på sideglasset før det monteres i profilerne.

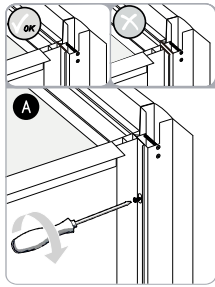
SAMLEVEJLEDNING

7

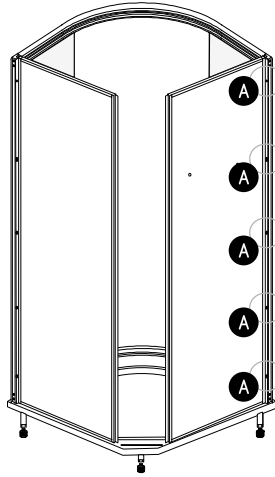


5 x (Ø4 x 12mm)

8

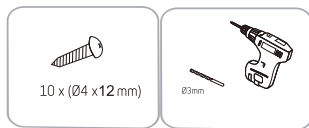
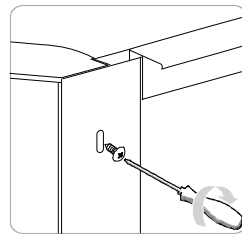
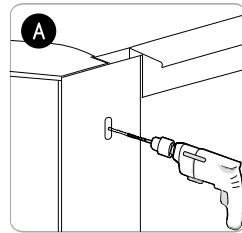
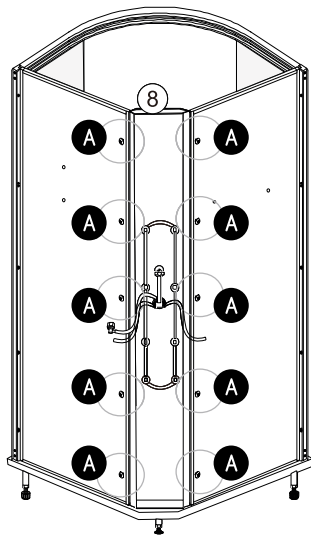
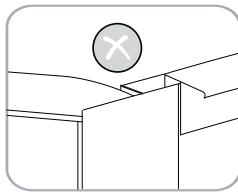
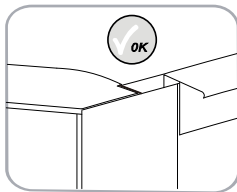


5 x (Ø4 x 12mm)



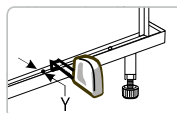
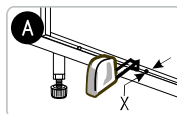
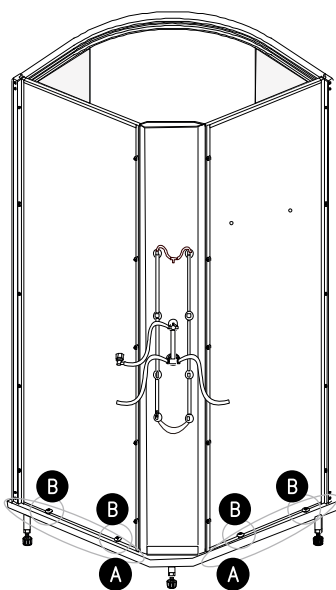
SAMLEVEJLEDNING

9

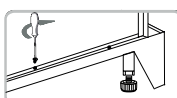
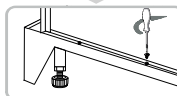
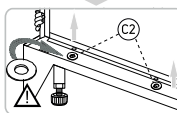
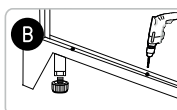


SAMLEVEJLEDNING

10



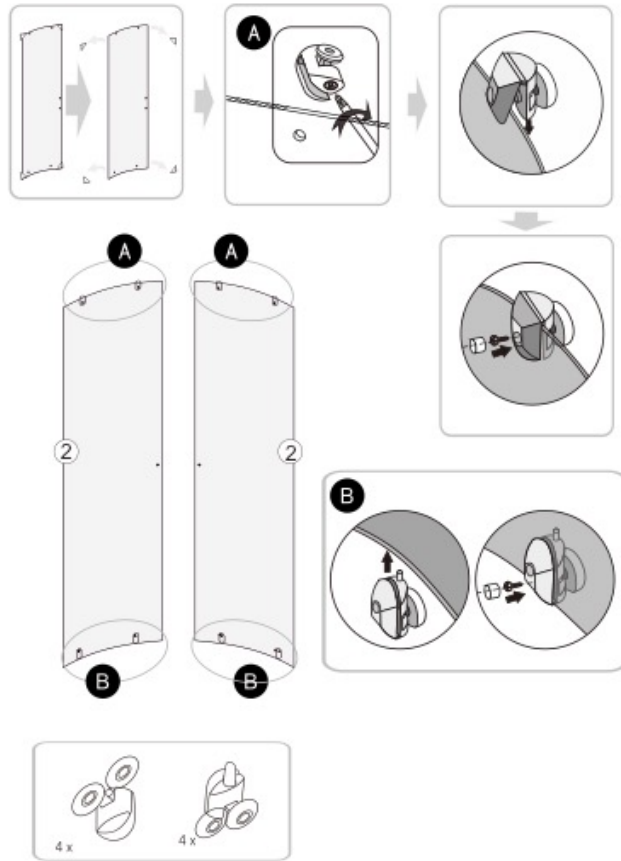
$\triangle X = Y \triangle$



Fastgør kabinen til bundkaret. Placer en kant af vådrumssilikon inden kabinen løftes på.

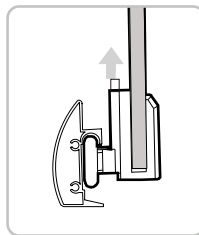
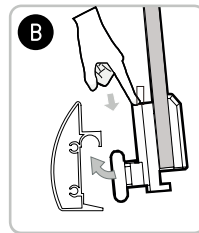
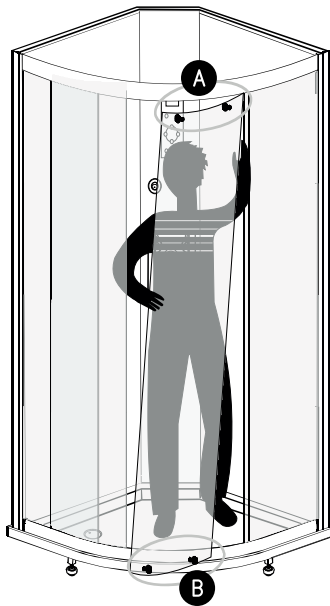
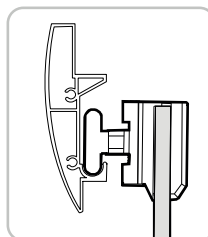
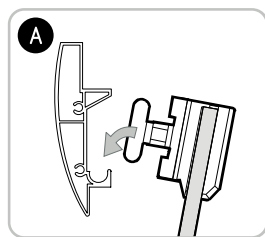
SAMLEVEILEDNING

11



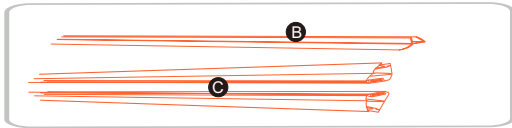
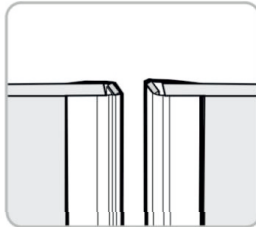
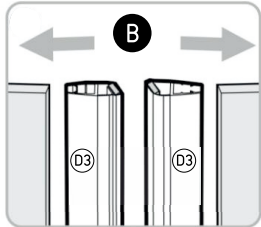
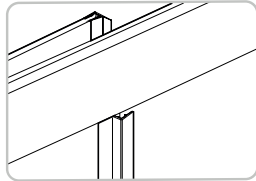
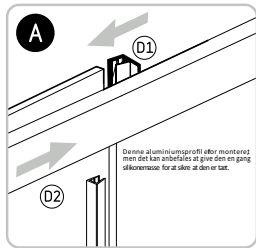
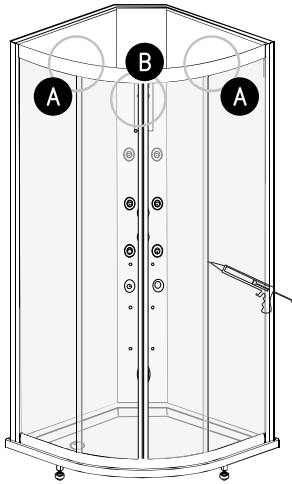
SAMLEVEJLEDNING

12



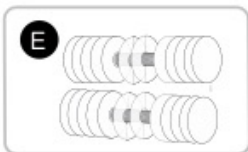
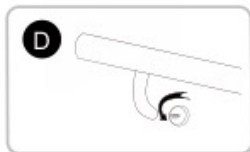
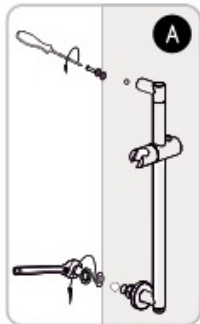
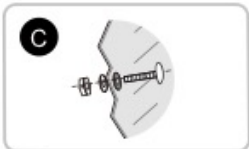
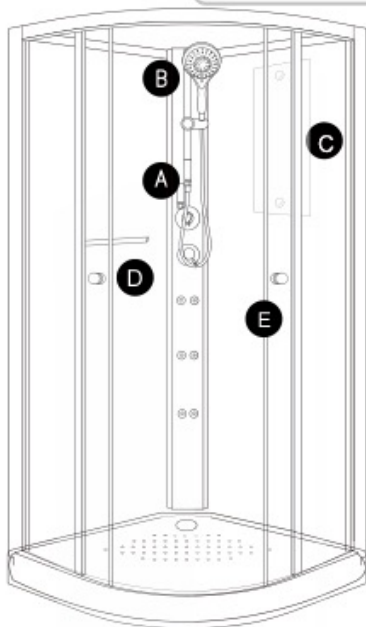
SAMLEVEJLEDNING

13



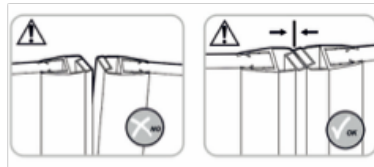
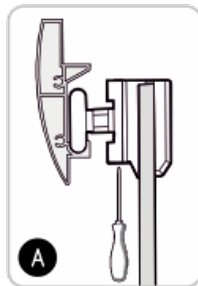
SAMLEVEILEDNING

14



SAMLEVEJLEDNING

16



Brug vådrumsskikene imellem bundprofil og bundkar